

Step-by-step guide

Import a tool library

Learn how to share tool libraries by importing and exporting existing tool libraries.

Learning objectives:

- Import a tool library.

▼ Learn CAM 90 - INCH			
	1 - $\varnothing 1/4"$ 90° (1/4" Spot Drill)		0.25 in
	2 - $\varnothing 0.201"$ 118° (#7)		0.201 in
	3 - $\varnothing 1/4"$ (1/4-20 UNC)		0.25 in
	4 - $\varnothing 1/2"$ 45° (.5" x 45 Engraving Tool)		0.5 in
	5 - $\varnothing 2"$ (2" Face Mill)	0 in	2 in
	6 - $\varnothing 1/4"$ (1/4" Flat Endmill)		0.25 in
	7 - $\varnothing 1/2"$ (1/2" Flat Endmill)		0.5 in
	8 - $\varnothing 3/16"$ (3/16" Ball Endmill)		0.1875 in

The completed exercise

1. Open a new Untitled tab inside Fusion and make sure you are in the Manufacture workspace. Open the Tool Library dialog by clicking Manage> Tool Library.

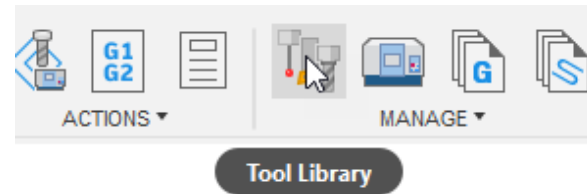


Figure 1. Open the Tool Library dialog

2. Determine whether you want to import the tool library onto your local machine or into the Cloud. The advantage of Cloud libraries is that they are available on any machine you log into. Select either the Cloud or Local options in the dialog's left column, right-click it, then choose the Import libraries option from the menu.

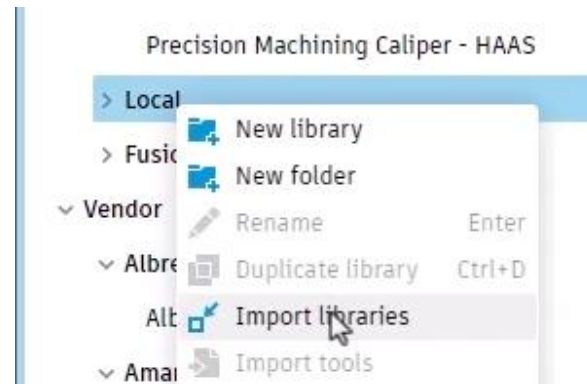


Figure 2. Click Import libraries

3. Navigate to the supplied *Learn CAM 90 – INCH.tools* file and select it.

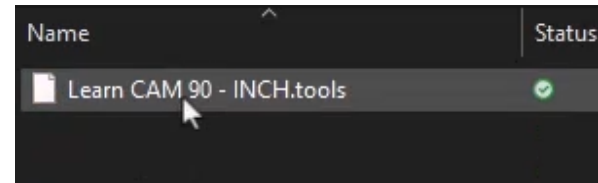


Figure 3. Locate the supplied file

4. Click Open to open and import the supplied tool library.

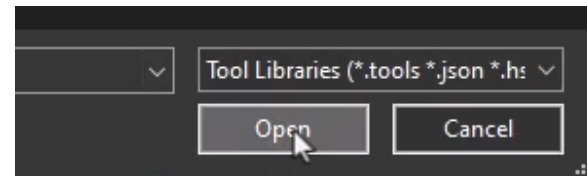


Figure 4. Open the supplied tool library

5. In the Tool Library dialog, click the tool library you just imported. This will open the library so you can see its tools.

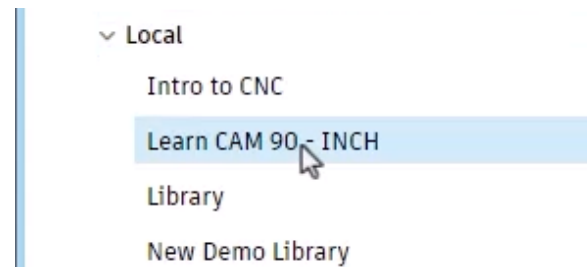


Figure 5. Open the imported tool library

6. Explore all the tools included in the library you imported. These are all the tools needed to machine the cell phone holder model.



Figure 6. Explore the imported tools

7. In addition to importing libraries, Fusion also allows you to export libraries. You can right-click the library you want to export and choose Export library from the menu.

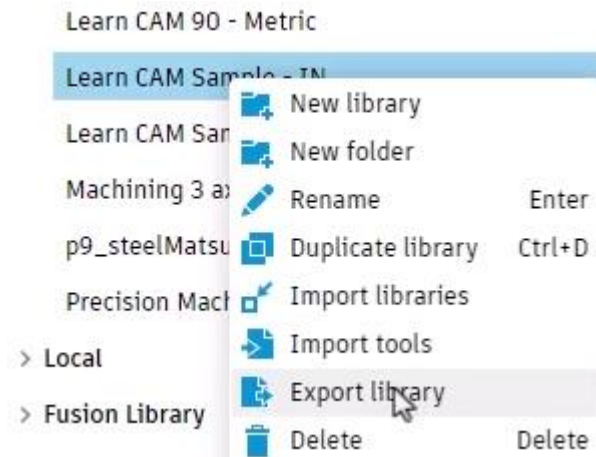


Figure 7. Note how to export a library

8. After you finish exploring the imported tool library, close the Tool Library dialog. The changes are already saved to the Cloud.



Figure 8. Close the dialog